

6380 Spigot Adaptors

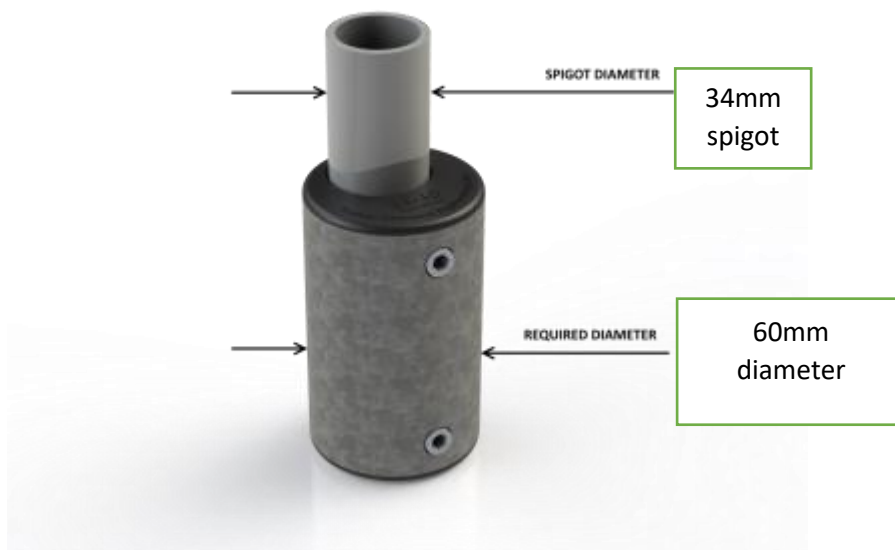
This galvanised adaptors for lighting columns provide a rigid fix to a 34mm spigot to fit a 60mm aperture luminaire. The unique internal sleeve maximizes the fixing of the luminaire and stops rotational movement.

Features

Patented system offers a quick and easy solution to mounting a luminaire

Retaining nut is fixed in place to allow maximum pressure to be applied

Fitted with stainless steel grub screws



C&R Outdoor Lighting Ltd

www.crlighting.co.uk